

Daka

CONFERENCE TABLES AND FURNITURE



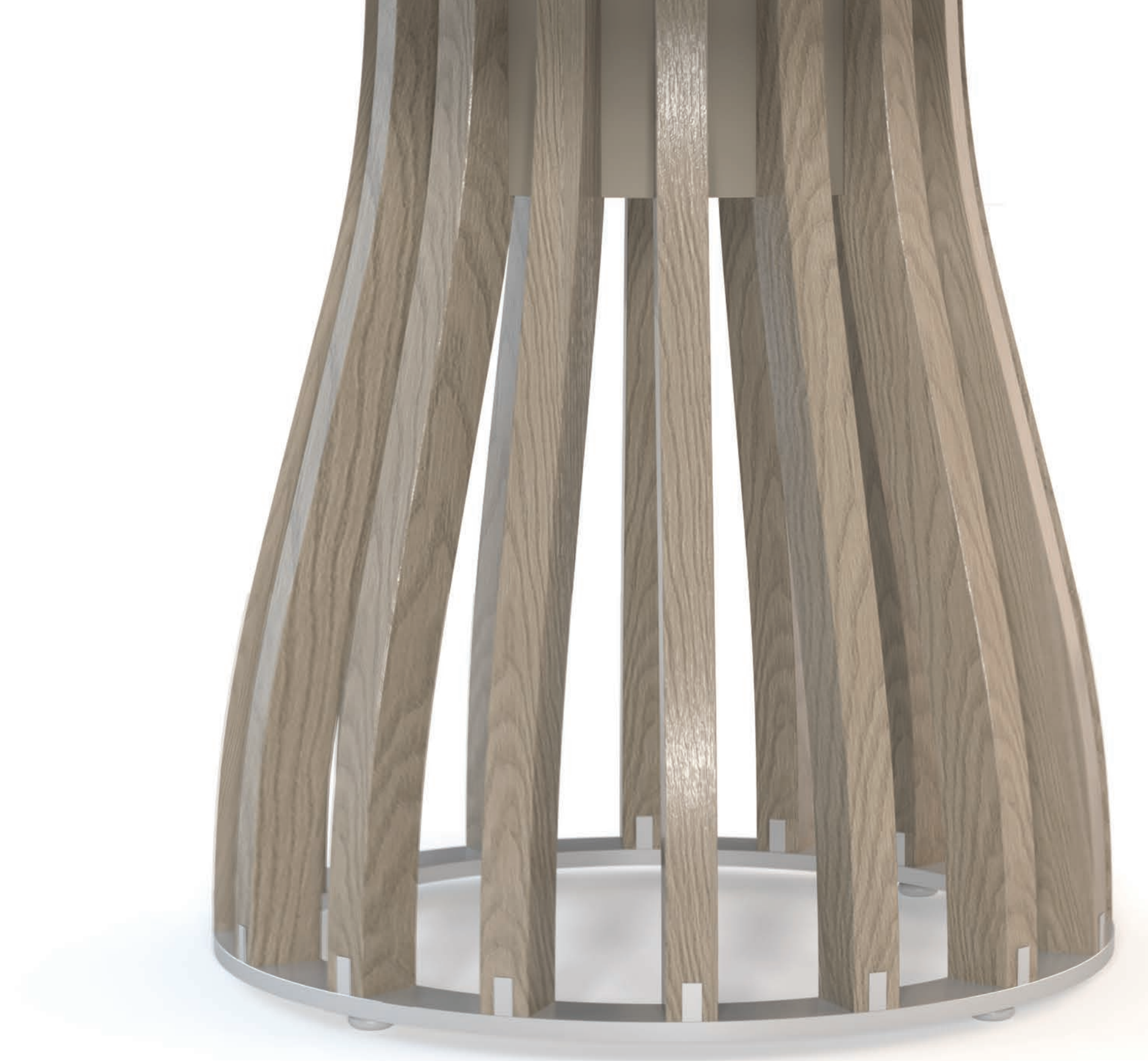
WALLGOLDFINGER
FURNITURE

Doko tables, credenzas and waste receptacles offer corporate environments a conference and gathering solution built with both elegance and integrity. Named for the shape of doko carrying baskets common in places like Nepal, Doko tables feature unique bases made from sculptural solid wood ribs captured in a metal bottom rim. Tabletops offer two edge options and diverse material choices. Doko tables are available in a broad range of shapes, sizes and materials and feature integrated technology. Match your Doko table with a Doko credenza and the one-of-a-kind Doko waste receptacle, a fashionable and professional alternative to traditional waste and recycling bins.

This diverse collection further is constructed in a state-of-the-art factory that utilizes 100 percent renewable energies, burns all factory-generated waste into heat, and is minority and woman owned. Choose elegance. Choose strength. Choose integrity. Choose sustainability. Make Doko your go-to in furniture specification.

WallGoldfinger Furniture, a division of Mark Richey Woodworking, collaborated with Gensler, serving as product design consultant, for Doko.

© 2021. All rights reserved.





TABLE

48" round and 60" square tables
with applied metal edge

White cast acrylic

solid walnut

natural anodized aluminum

WASTE RECEPTACLE

Trio

White cast acrylic

quartered walnut veneer

natural anodized aluminum



TABLE

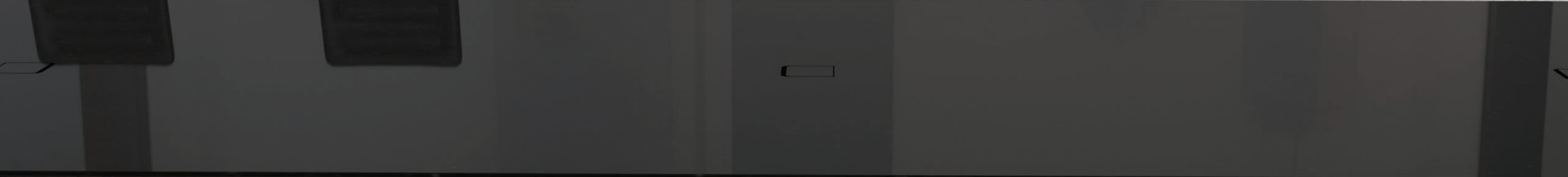
72" x 180" rectangular table
with knife edge
rift cut white oak veneer
solid white oak
light bronze anodized aluminum

CREDENZA

Tall 28" depth, 96" length
Neutral Concrete solid surface
rift cut white oak veneer
light bronze anodized aluminum

WASTE RECEPTACLE

Trio
Neutral Concrete solid surface
rift cut white oak veneer
light bronze anodized aluminum



TABLE

72" x 240" rectangular table
with knife edge
Cambrian Black granite
solid walnut
black matte anodized aluminum

CREDENZA

Small 120" length
Cambrian Black granite
glass back painted Twilight Zone
quartered walnut veneer
black matte anodized aluminum

SPECIFICATIONS

SHAPES AND SIZES



42", 48" and 54" round



60", 72" and 84" round



42", 48" and 54" square



60", 72" and 84" square



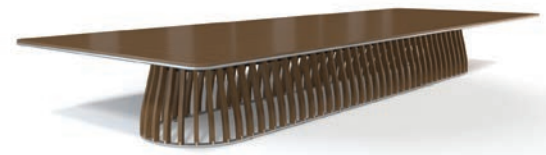
48" rectangular with radiused corners (90", 120" and 150" lengths)



60" rectangular with radiused corners (90", 120", 150", 180", 210" and 240" lengths)



72" rectangular with radiused corners (120", 150", 180", 210" and 240" lengths)



84" rectangular with radiused corners (120", 150", 180", 210" and 240" lengths)

Tables are between 29" and 30" high depending on edge and top material chosen.

BASES



Inverted round (for 42", 48" and 54" round and square tables and 48" rectangular tables)

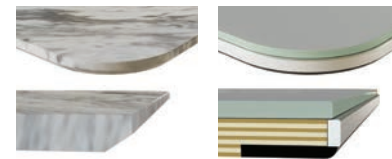


Round (25" and 37" diameters depending on tabletop width)



Full (25" and 37" widths depending on tabletop width)

EDGES



Reverse knife with flat, 3/4"-1" thickness

Applied metal with Delrin chair protector, 3/4" plus top material (shown with 3/8" glass)

TECHNOLOGY



Tabletop box with (4) Simplex, (4) USB-As and (1) blank telecom plate



6" wire management column



Sliding 12" wire management box



Removable staves

Populate your box. Popular choices:



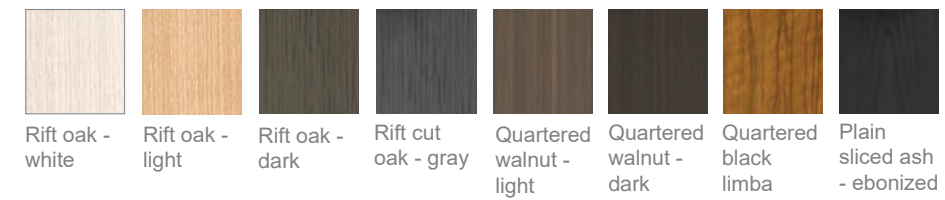
2 RJ45s 1 HDMI



1 RJ11 and 2 RJ45s 1 HDMI, 1 VGA and 1 mini-stereo

TOP MATERIALS

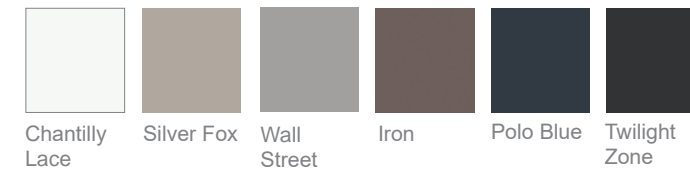
VENEER



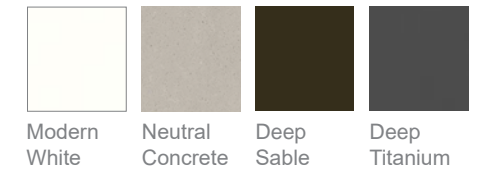
CAST ACRYLIC



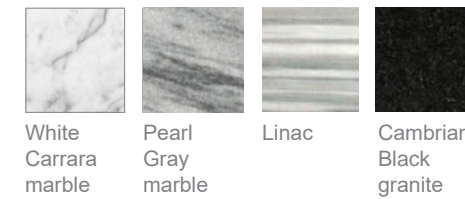
GLASS



SOLID SURFACING



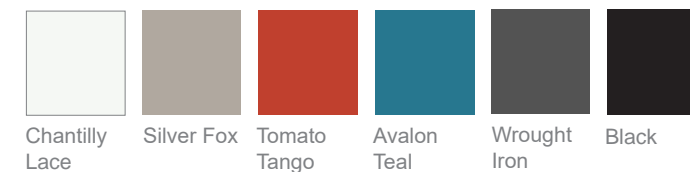
STONE



ENGINEERED QUARTZ



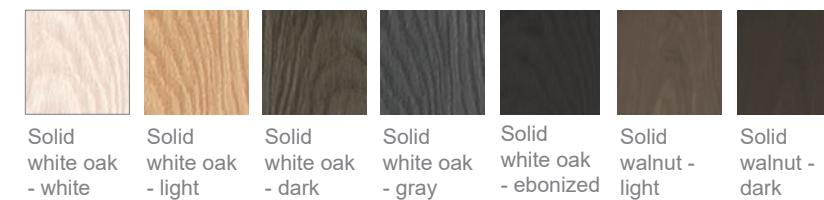
OPAQUE URETHANE



Or specify any urethane, veneer, stone, cast acrylic, glass, solid surfacing or engineered quartz.

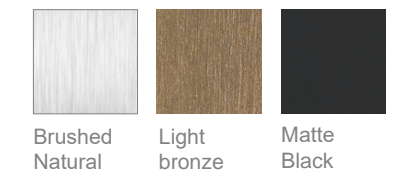
BASE MATERIALS

BASE STAVES



METALS

ANODIZED ALUMINUM*



*Powder coated or other metal solutions may be required for small quantity orders and/or supply availability.

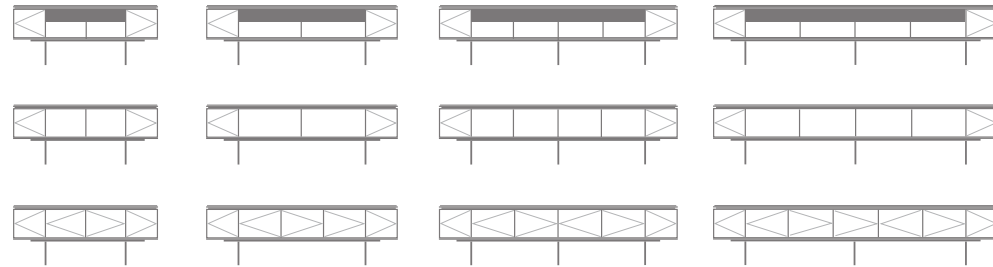
DOKO CREDENZAS



Choose a top material, a veneer or urethane cabinet, black urethane accents and metal (1" round) legs.

SMALL

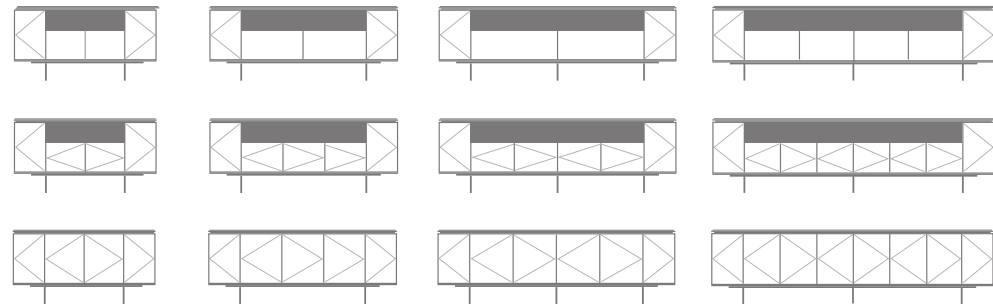
DEPTH: 22"
 LENGTH: 72", 96", 120" and 144"
 HEIGHT: 29½" high (plus the top material thickness)
 COMPONENTS: Open shelves, drawers, cabinets with shelf



A taller credenza available in a 28" depth for AV racks and increased storage

TALL

DEPTH: 22" and 28"
 LENGTH: 72", 96", 120" and 144"
 HEIGHT: 34" high (plus the top material thickness)
 COMPONENTS: Open shelves, drawers, cabinets with shelf, waste receptacle, AV rack capacity



Curved exterior doors provide a one-of-a-kind look and more pristine credenza front. To upgrade or for longer credenzas, mix and match top materials. Add clear glass in an open shelf or, in the case of credenzas with veneer tops, add clear glass on the credenza top above the open shelf section for added durability.



CREDENZA

Tall 96" long
 Deep Sable solid surfacing
 quartered black limba
 light bronze anodized aluminum

TABLE

84" square with applied metal edge
 Deep Sable solid surfacing
 solid white oak

WASTE RECEPTACLE

“Deep Sable” solid surfacing
quartered black limba
light bronze anodized aluminum

TABLE

84” square with applied metal edge
“Deep Sable” solid surfacing
solid white oak



WASTE RECEPTACLE

Trio

Deep Sable solid surfacing
quartered black limba
light bronze anodized aluminum

DOKO WASTE RECEPTACLES

DUO

DEPTH: 17¼”
LENGTH: 24½”
HEIGHT: 29½” high (plus the top material thickness)
COMPONENTS: Two lift-out 10-gallon black plastic waste bins behind two cabinet doors, two top



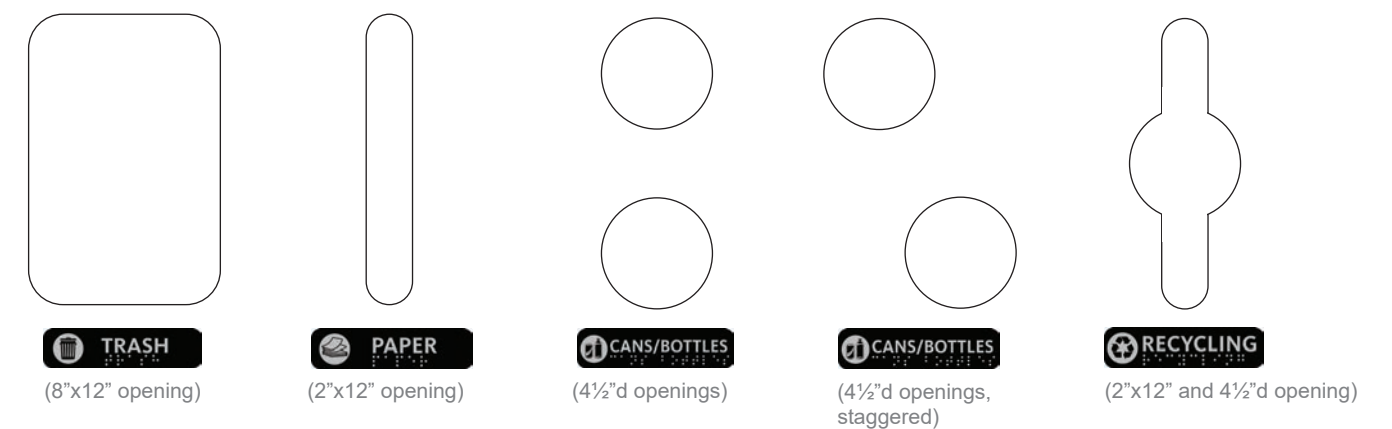
TRIO

DEPTH: 17¼”
LENGTH: 36”
HEIGHT: 29½” high (plus the top material thickness)
COMPONENTS: Three lift-out 10-gallon black plastic waste bins behind two cabinet doors, three top cutouts



Choose a top material, a veneer or opaque lacquer cabinet, and anodized metal color for the waste receptacles 1” round legs. Consider the durability and stain resistance of your top material. Clear glass is recommended over veneer top surfaces. Stones can be susceptible to staining and etching and should only be chosen if a rigorous program of frequently wiping up spills will be utilized.

TOP CUTOUT OPTIONS AND LABELING



Top cutout options available for both waste receptacles and credenzas. Cutouts to include flush mounted ¾"x3" label with black background, radiused corners and raised silver or brass graphic, text and Braille. Labels are affixed with strong adhesive and are weatherproof.



WALLGOLDFINGER
FURNITURE

a division of Mark Richey Woodworking

802.278.5800 | sales@wallgoldfinger.com | www.wallgoldfinger.com